



Changzhou Meditech Technology Co., Ltd.

Address: 9th. Floor, Inno Laser Building, Science & Education Town, Wujin District,
Changzhou City, Jiangsu Province, China. PC: 213164

Website: www.czmeditech.com

Tel/Fax: +86-519-85855955



2025

Changzhou Meditech Technology Co., Ltd.



PROFESSIONALITY

Focus on Neurosurgery for over 20 years, with rich experience and technical accumulation



QUALITY

With ISO13485 and CE certificate, guarantees good product quality



INNOVATION

Guided by clinical needs, continuous development and innovation



SERVICE

Fast, active and responsible pre-sale and after-sale service, worry-free in whole service life



13485:2016



CRANIAL STABILIZATION
SYSTEM

HDJ-IV A800 Cranial Stabilization System

It is designed for DSA, CT, MRI and Fluoroscopy,aim to meet the clinical demands on neuro, spinal and interventional therapy.

The system have a “metal-free” option, plus the synthetic Sapphire-Carbon composite skull pin, could meet the requirement in MRI room and provide a good control on minimal imaging artifact.

1 Stable, high-precision 3-point fixation of the head during surgery.

2 Torque screw make the skull pin pressure visualization.

3 Suit for both for children and adults.


4 Easy fixation and best view.

5 Fixation of patient in prone, supine, lateral

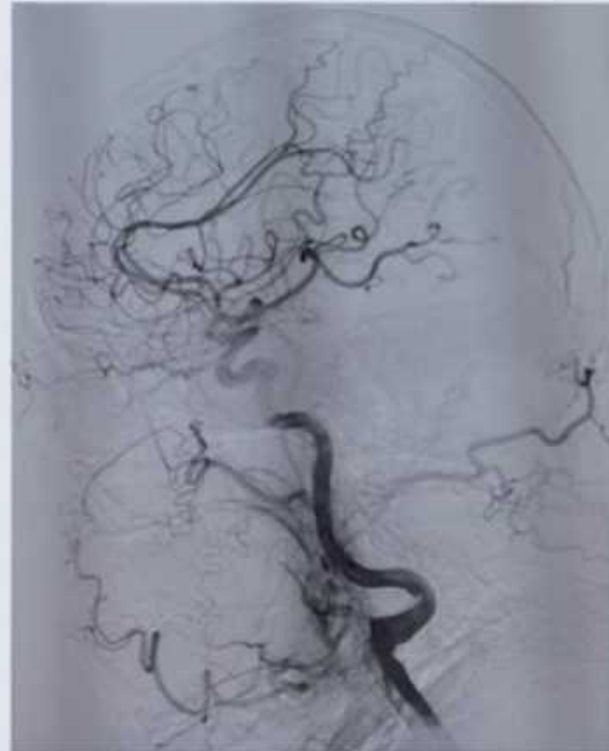
6 Could compatible with most DSA carbon table after replace with DSA table adapt base unit. Accept customization to adapt special table.

7 Horizontal bar provides a wide imaging window - full, side-to-side lateral positioning(24 inches/61cm)

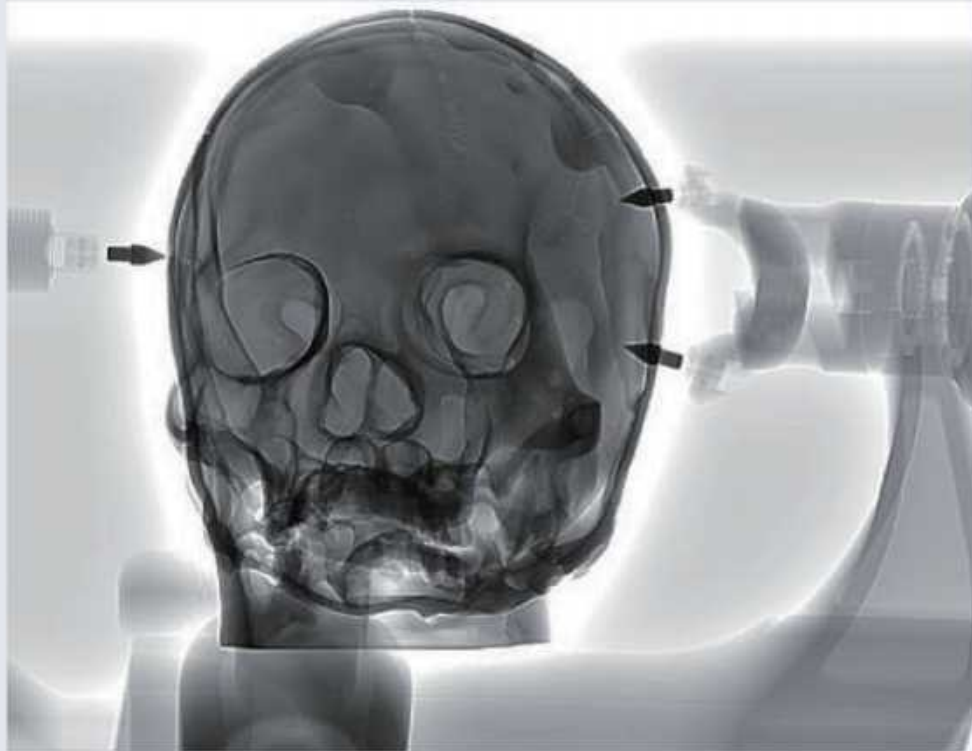
8 Unique pitching adjusting joint provide more flexibility on position setting.



Component	
Description	Code
Head Clamp	HA82016
Swivel Adaptor	HA83016
Extension Member	HA84116
Transitional Member	HA84026
Universal Base Unit	HA84106
Composite Skull Pin (Adult)	HA01016



DSA image with Radiolucent Skull Clamp in use



Skull Clamp under Fluoroscopy version

HDJ-IV A800 Cranial Stabilization System



Head Clamp

- Code: HA82016
- Pressure visualized.
 - Easy lock dual pin holder.
 - Whole material is metal free.

70mm-240mm



Swivel Adaptor

- Code: HA83016
- Adjustable on both horizontal and vertical planes.
 - Whole material is metal free.



Transitional Member

- Code: HA84026
- Length 20cm.
 - Make more distance between base unit and swivel adaptor.
 - Use with extension member HA84116.
 - Whole material is metal free.



Extension Member

- Code: HA84116
- Length 15cm.
 - Used when need more length of base and more Angle adjustment range.
 - Use with 20cm transitional member HA84026.
 - Whole material is metal free.

Base Unit

- Code: HA84106
- Universal table clamp,could match with both US&Eu-rope model side rail.
 - Adjustable on width, pitch angle.
 - Table clamp part is aluminum and stainless steel,oth-ers metal free.



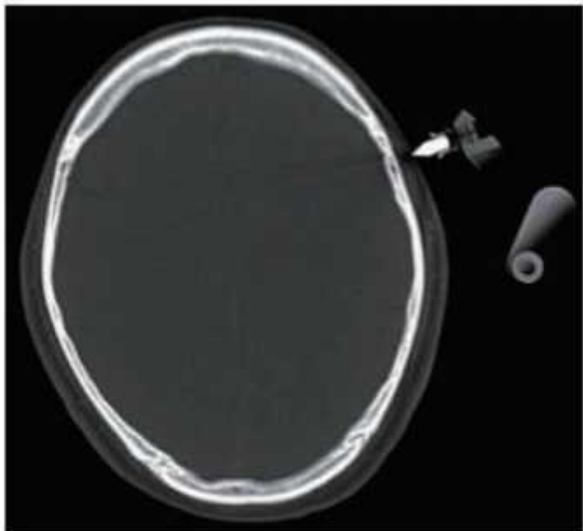
HDJ-IV A800 Cranial Stabilization System



Radiolucent Skull Pins

Code: HA01016(Adult)/HA01026(Pediatric)

- Titanium pin tip plus composite material base, good imaging performance.



Under CT version



Transitional Member

Code: HA84016

- Length 15cm.
- Used when no request on the extension distance.



Headrest & Traction

Code: HA85016(Headrest)
HA85036(Traction)

- Whole part is metal free.
- Gel pad provide good hemodynamic performance.



Radiolucent Headrest
Traction System

HDJ-II A600 Cranial Stabilization System

All Parts are Cutting from High performance Aluminum Alloy with CNC machine, high strength, better than the casting skull clamp. Surface harden treatment, more durable, anticorrosion and less light reflection.

Torque Screw
Visual setup for the pin pressure,
ensure the safety of surgery.



Quarter Lock Handle
One quarter to lock,
simple and efficient operation.



Crocodile Teeth
Unique Crocodile Teeth design,
provide firmly connect with C-clamp.
Make a strong support to the accessories.
It also could protect the clamp arms,
extend it's service life.

Component	
Description	Code
Head Clamp	HA62011G
Swivel Adaptor	HA03011G
Base Unit	HA64011G
Gel pad Headrest	HA65011G
Adult Skull Pin	HA01013P
Child Skull Pin	HA01023P

HDJ-II A600 Cranial Stabilization System



Head clamp

Code: HA62011G

- Quarter lock rock arm, one quarter to lock, simple and efficient operation.
- Visual setup for the pin pressure, ensure the safety of surgery.
- Crocodile Teeth design, providing stable and firm attachment support.
- Clamping distance from 12cm to 24cm, compatible with adults and children.
- 13 cm depth, meeting the needs of most skull size.
- Compatible with DORO & Mayfield.



Swivel Adaptor

Code: HA03011G

- Horizontal adjustment range: 360 degree, Vertical adjustment range: 270 degree
- Stable, durable, and easy setting the position.
- Compatible with DORO & Mayfield.



Base Unit

Code: HA64011G

- Width adjustment range of 100mm-560mm, suitable for most of OT table.
- Standard size of the connect rod is $\phi 14\text{mm}$, also have 12mm, 16mm, 18mm and other options to match the OT table.
- Bearing capacity over 35kg.
- Compatible with DORO & Mayfield.



Gel Pad Headrest

Code: HA65011G

- Providing support in the prone or supine position for adults and children.
- Adjustable pad base could fit various head sizes.
- Providing good hemodynamic performance and preventing bedsores during operation.
- The pad could be soaked in warm water in advance to reducing the loss of body-temperature during long-term operation.
- Compatible with DORO & Mayfield.

HDJ-II A500 Cranial Stabilization System

Three-pin positioning design, supported by high standard processing control, small assembly clearance and stable locking, effectively provide a firm skull support.
Light-weight structure design, easy to handle and set.
Surface harden treatment, more durable, anticorrosion and less light reflection.



Head Clamp

Code: HA52011G

- Light-weight structure design.
- Quarter lock rock arm, one quarter to lock, simple and efficient operation.
- Visual setup for the pin pressure, ensure the safety of surgery.
- Clamping distance 12cm-24cm, compatible with adult and children head clamp.
- Depth 13cm, meeting the most needs of skull size.



Swivel Adaptor

Code: HA03011G

- Horizontal adjustment range: 360 degree, Vertical adjustment range: 270 degree
- Stable, durable, and easy for proper adjustment after the patient fixed on the clamp.



Base unit

Code: HA54011G

- Width adjustment range of 100mm-560mm, suitable for most of OT table.
- Standard size of the connect rod is $\phi 14\text{mm}$, also have 12mm, 16mm, 18mm and other options to match the OT table.
- Bearing capacity over 35kg, without shaking.



Silica Headrest

Code: HA55011G

- Providing support in the prone or supine position for adults and children.
- Adjustable pad base could fit various head sizes.

Component						
Description	Head Clamp	Swivel Adaptor	Base Unit	Silica Headrest	Adult Skull Pin	Child Skull Pin
Code	HA52011G	HA03011G	HA54011G	HA55011G	HA01013P	HA01023P

CRANIAL STABILIZATION SYSTEM ACCESSORIES



Noninvasive Skull Clamp

- Gel pad and skull clamp could be switched quickly
- Middle gel pad could be adjusted up and down
- Easy set up and use
- Normally use for 0~2 years newborn patients or patients whose skull could't bear the pressure of skull pins

Code: HA72011G



Gel Pad Headresting with traction

- Support supine and prone positions in Neuro, ENT and eye surgery
- The distance between two pads could be adjusted, both fine for adults and children
- Gel pad could effectively prevent bed sore caused by prolonged surgery
- Traction arm provides better view for surgery

Code: HA65021G



Ball Socket Adaptor

- Horizontal adjustment range: 360°
- Vertical adjustment range: 90°
- Compatible with Doro & Mayfield

Code: HA03021G



Navigation Adaptor

Code: HR07021G



Adult skull pin

Code: HA01013P



Pediatric skull pin

Code: HA01023P



Sterilizing Container

Produced by high polymer material, with silica pad, could protect the pins well

Code: HA01800P

CRANIAL STABILIZATION SYSTEM ACCESSORIES



Cross Bar

- Apply to sitting position
- Adapt to most operating tables

Code: HA07031G

Table Adaptor

- Adapt to most operating tables
- Support lateral position

Code: HA07013P



Anatomy skull clamp

- Could be placed on the desktop
- Quick-lock base
- With ball socket adaptor, easy set and use

Code: A903

Teflon® Coating Skull Clamp

- Autoclavable
- With US DuPont Teflon® coating
- Antisticking and easy-cleaning
- Other tech info same with A600 skull clamp

Code: A602



BRAIN RETRACTOR SYSTEM

B

HDR-II R800 Brain Retractor System (HALO)



HALO Ring HR83011G



Support Bar HR82013Y



C Clamp for HALO HR81013Y



HALO Leyla retractor
250mm HR04253Y

Main feature:

- The HALO ring could be adjusted at any angle, as well as folding in half. Maximizing the view and provide the hand support during surgery.
- Quick rail design, the retractor could be firmly docking on it at any position.
- Light weight design, easy handle and set up, high performance aluminum alloy guaranty both the strength and durability.
- C clamp could be firmly connected with A600 skull clamp, also adapt to the other brand skull clamps.

Component							
Description	HALO Ring	Support Bar	C Clamp for HALO	HALO Leyla retractor	HALO Brain Blade	HALO Pattie Tray	Universal Key
Code	HR83011G	HR82013Y	HR81013Y	HR04253Y	A complete set	HR07013Y	HR00013Y

HDR-I R700 BRAIN RETRACTOR SYSTEM (J-ARM)

Product Feature :

- Two J-arms could be fixed on the skull clamp and adjusted at suitable height & angle.
- Quick rail design, the retractor could be firmly locking on it at any position, could provide the hand support during surgery.
- Light weight design, easy handle and set up, high performance aluminum alloy guaranty both the strength and durability.



HALO Brain Blade

- HR05013Y: 152*6mm
- HR05023Y: 152*10mm
- HR05033Y: 152*16mm
- HR05043Y: 152*19mm
- HR05053Y: 152*25mm



C Clamp for J-Arm

HR71013Y



J-Arm

HR73011G

Component					
Description	C Clamp for J-Arm	J-Arm	HALO Leyla retractor	HALO Brain Blade	HALO Pattie Tray
Code	HR71013Y	HR73011G	HR04253Y	A complete set	HR07013Y

HDR-I R300 BRAIN RETRACTOR SYSTEM



FIXATION MOUNT

- Fixed on the side rail of OT-table, the ball socket table adaptor could adjust at any angle, easy set and quick mounting leyla retractor.

Code: R300



Ball Socket Adaptor

360°Adjustment
HR31013Y



Support Rod(straight)

340mm
HR32013Y



Support Rod(angled)

420mm
HR32023Y



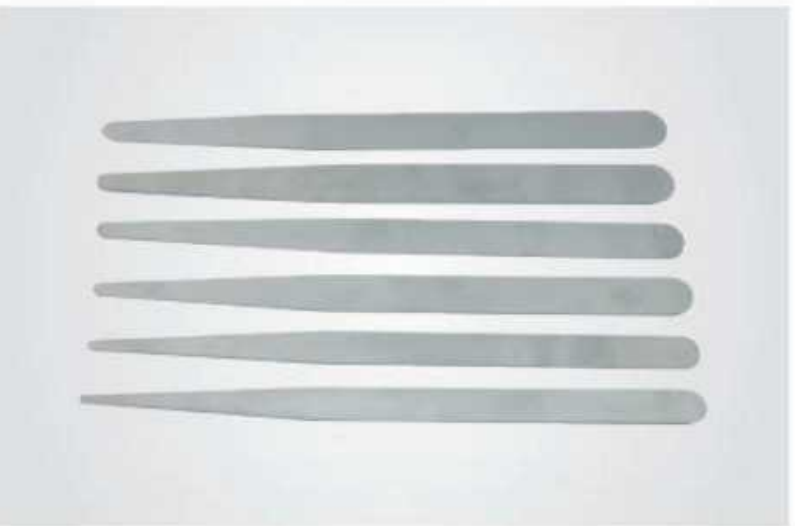
Leyla adaptor

HR33013Y



Leyla Retractor

Quick Lock HR90103Y: 350mm
 HR90203Y: 400mm
 HR90303Y: 450mm



Brain Blade

HN40123Y: 200*12mm
HN40143Y: 200*14mm
HN40163Y: 200*16mm
HN40183Y: 200*18mm
HN40203Y: 200*20mm

Component						
Description	Ball Socket Adaptor	Support Rod (straight)	Support Rod (angled)	Retractor arm connector	Leyla Retractor	Brain Blade
Code	HR31013Y	HR32013Y	HR32023Y	HR33013Y	HR90103Y	HN40123Y

HDR-I R400 BRAIN RETRACTOR SYSTEM



Martin's Arm Retractor

- Unique locking structure provides excellent load-bearing performance, without loosen at max 5KG load.
- Multifunctional purpose, could be used as instrument holder, retractor holder, endoscopes holder and brain retractor frame. Could meet the various demands in OT room safety and quickly.

Code: R400



Table Adaptor

50mm
HR41013Y



Support rod

400mm(H)*120mm
HR42013Y



Universal Arm

Vertical adjustment range: 360°
HR43013Y

Instrument Holder:



Instrument Holder

Material: Stainless steel
Clamping range: 6-10mm
Suitable for retractor and instrument
HR44013Y



Endoscope Holder (Side)

Material: Aluminum alloy
Range: 10-25mm
Suitable for endoscope, working channels and instruments
HR44023Y

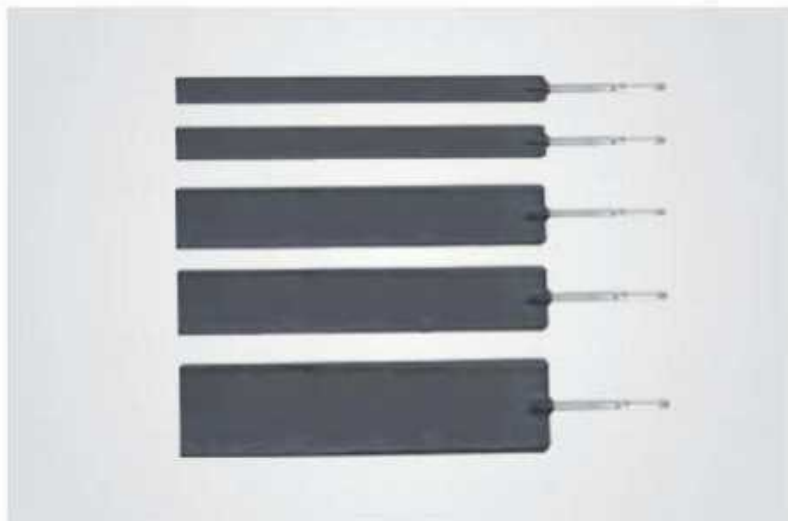


Endoscope Holder (Front)

Material: Aluminum alloy + Polymer material
Range: 3-22mm
Suitable for endoscope & instruments
HR44033Y

Standard Component				
Description	Table Adaptor	Support rod	Universal Arm	Instrument Holder
Code	HR41013Y	HR42013Y	HR43013Y	HR44013Y

BRAIN RETRACTOR SYSTEM ACCESSORIES



HALO Brain Blade - Coated

HR05013D:152*6mm
HR05023D:152*10mm
HR05033D:152*16mm
HR05043D:152*19mm
HR05053D:152*25mm



Micro Brain Blade

HR06013Y:114*2mm
HR06023Y:114*4mm
HR06033Y:140*2mm
HR06043Y:140*4mm
HR06053Y:165*2mm
HR06063Y:165*4mm



HALO Pattie tray

HR07013Y



Brain Blade - Coated

HN40123D:200*12mm
HN40143D:200*14mm
HN40163D:200*16mm
HN40183D:200*18mm
HN40203D:200*20mm



Skull Adaptor

HR90033Y
Clamp on skull to adapt Leyla arm.



Standard Adaptor

Fix on skull clamp to fix Leyla arm. Compatible with any skull clamp. Compatible with other brands of Leyla retractor such as Aesculap.
HR90013Y



C-clamp for Leyla Retractor

HR90033Y



HALO Leyla retractor

HR04253Y:250mm
HR04303Y:300mm
HR04353Y:350mm



Universal Key

HR00013Y